

Li-Y (Lithium-Yttrium)

H. Okamoto

The Li-Y phase diagram was unknown in [Massalski2].

Figure 1 shows the Li-Y phase diagram constructed on the basis of a schematic phase diagram and a table of invariant reaction temperatures and compositions given in [1998Gan].

Table 1 shows Li-Y crystal structure data.

Reference

1998Gan: N.N. Ganiev, Kh.M. Nazarov, and M.D. Badalov, Interaction of Lithium with Rare-Earth Metals, *Izv. Ross. Akad. Nauk, Metally*, 1998, (6), p 109-112, in Russian; TR: *Russ. Metall.*, 1998, (6), p 132-136

Table 1 Li-Y crystal structure data

Phase	Composition, at.% Y	Pearson symbol	Space group	Strukturbericht designation	Prototype
(β Li)	0-1.47	$cI2$	$Im\bar{3}m$	A2	W
(β Y)	? to 100	$cI2$	$Im\bar{3}m$	A2	W
(α Y)	? to 100	$hP2$	$P6_3/mmc$	A3	Mg

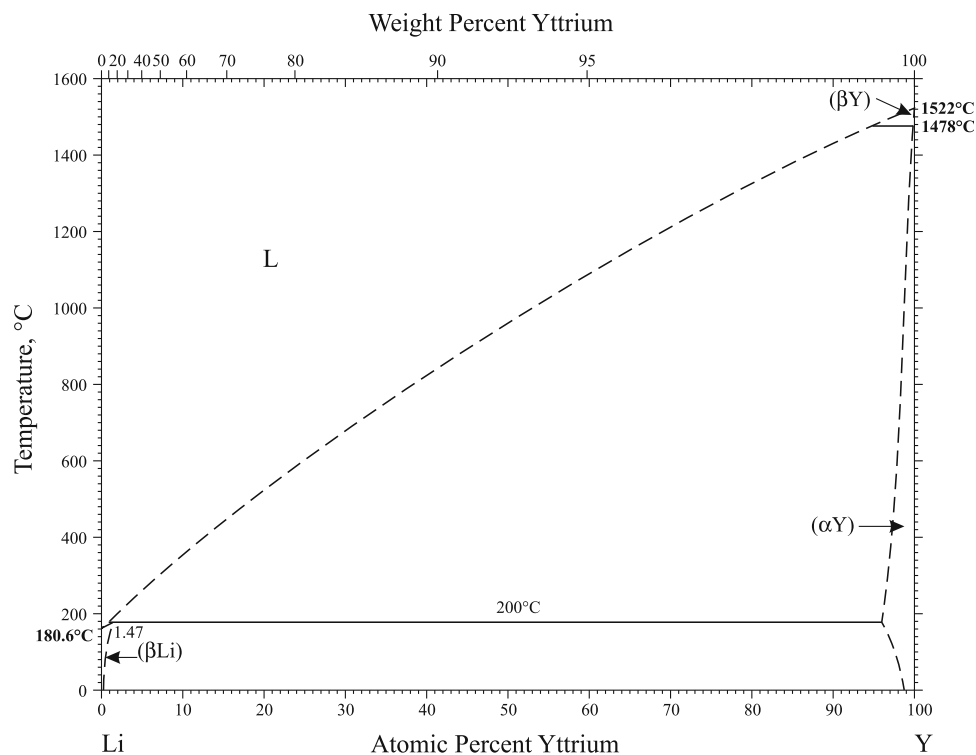


Fig. 1 Li-Y phase diagram